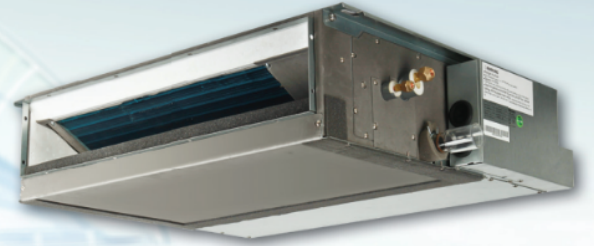


**LCAC****DUCT TYPE****INVERTER**

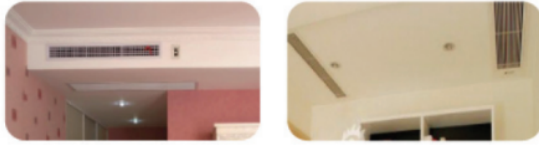
Remarks:

The design and specifications are subject to change without prior notice for product improvement.

The values given in the table for noise level reflect the levels in anechoic chamber.

Model Number			AUD-18UX4SSKL2	AUD-24UX4SLL1	AUD-36UX4S1AHL	AUD-48UX6SPHH	AUD-60UX6SPHH
Indoor model			AUD-18UX4SKL2	AUD-24UX4SLL1	AUD-36UX4SHL	AUD-48UX4SHH	AUD-60UX4SHH
Outdoor model			AUW-18U4SS	AUW-24U4SF1	AUW-36U4S1A	AUW-48U6SP	AUW-60U6SP
Power supply	(Indoor)	V-ph-Hz	220~240-150	220~240-150	220~240-150	220~240-150	220~240-150
Power supply	(Outdoor)	V-ph-Hz	220~240-150	220~240-150	220~240-150	380-415-3-50	380-415-3-50
Cooling	Capacity	W	5200(2120 ~ 5630)	7200(2700~7850)	9800(3200~10000)	12600(5500-13500)	17000(6200-18000)
	Input	W	1730	2240	3500	3920	5295
	Current	A	7,6	10,20	15,0	7,5	10,8
Heating	Capacity	W	6000( 2640 ~ 6050)	8500(27700~8900)	11000(2700~12000)	15000(4000-18000)	20500(6400-21000)
	Input	W	1760	2350	3100	4150	5650
	Current	A	7,60	10,70	13,0	8	11,3
Indoor air flow Rated(Hi/Med/Lo)		m <sup>3</sup> /h	900/830/720	1100/950/800	1800/1600/1500	2000/1800/1500	2000/1800/1500
Indoor air flow Rated(CFM)		CFM	529/488/423	647/558/470	1058/940/880	1175/1060/880	1175/1060/880
ESP	Rated	Pa	10	50	50	80	80
	Range	Pa	10/30	50/80	50/80	80/120	80/120
Indoor noise level (Hi/Med/Lo)		dB(A)	36/35/33	40/37/34	40/39/38	53/49/47	52/49/47
Throttle type			NA	NA	NA	NA	NA
Indoor unit	Dimension (WxHxD)	mm	1170×190×447	900×270 ×720	1386×350×800	1386×350×800	1386×350×800
	Packing(WxHxD)	mm	1340×236×580	1170×870×340	1550×410×940	1550×410×940	1550×410×940
	Net/Gross weight	kg	24/28	32/37	54/62	50/58	50/58
Design pressure (H/L)		MPa	4.15/1.6	4.15/1.6	4,15	4.15/1.6	4.15/1.6
Drainage water pipe diameter		mm	DØ32	DØ32	DØ32	DØ32	DØ32
Refrigerant piping	Liquid side/ Gas side	mm	Ø6.35/Ø12.7(1/4'/1/2')	Ø9.52/ Ø15.88(3/8'/5/8')	Ø9.52/ Ø15.88(3/8'/5/8')	Ø9.52/ Ø19.05(3/8'/3/4')	Ø9.52/ Ø19.05(3/8'/3/4')
	Outdoor noise level (sound pressure)	dB(A)	50	56	60	60	60
Outdoor unit	Dimension (WxHxD)	mm	810×584×281	860×670×310	950×840×340	950x1386x340	950x1386x340
	Packing(WxHxD)	mm	940×420×640	990×450×730	1110×980×460	1110x1527x460	1110x1527x460
	Net/Gross weight	kg	36/40	51/57	70/74	101/107	108/112
Refrigerant type/ Quantity	Type		R410A	R410A	R410A	R410A	R410A
	Charged volume	kg	1,24	1,70	2,10	3,00	3,50
Design pressure (H/L)		MPa	4.15/1.6	4.15/1.6	4.15/1.6	4.15/1.6	4.15/1.6
Refrigerant piping	Liquid side/ Gas side	mm(inch)	Ø6.35/Ø12.7(1/4'/1/2')	Ø9.52/ Ø15.88(3/8'/5/8')	Ø9.52/ Ø15.88(3/8'/5/8')	Ø9.52/ Ø19.05(3/8'/3/4')	Ø9.52/ Ø19.05(3/8'/3/4')
	Max. pipe length	m	30	30	30	50	50
	Max. difference in level	m	15	15	20	30	30
Ambient temperature	Cooling	°C	-15 - 48	-15 - 48	-15 - 48	-15 - 48	-15 - 48
	Heating	°C	-10 - 24	-10 - 24	-10 - 24	-10 - 24	-10 - 24
Qty'per 20' /40' /40'HQ		Indoor+Outdoor	64/128/154	40/80/88	23/46/54	19/38/40	19/38/40

# FEATURES



## Optional Static Pressure

Adjustable external static pressure on Ducted systems. Wiring is factory set at lower external static and with a simple plug change the static can be increased.

Refer to technical manual or Hisense sales office for information relating to the static adjustments.



## 2 Ways of Air Intake

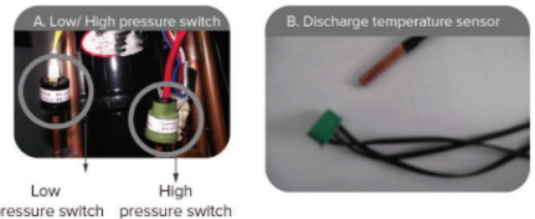
The ducted systems have 2 options for air return. Air can be returned as standard through the rear of the unit or alternatively can be returned below the unit. This is adjusted through a simple change of cover plate that will be removed from the bottom of unit and fixed to the back of the system.

**NOTE:** Bottom air intake is 5dB higher than the default rear intake.



## Slim Design

At a height of 190mm, this unit can be installed inside low ceiling residential buildings.



## Safety Protection

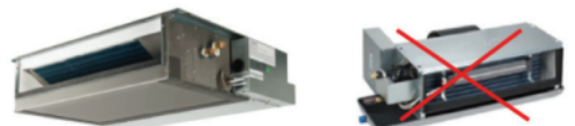
Ensure that the compressor operates in the safe range, and prevent damage caused by refrigerant leakage.



## Water Level Switch & Water Pump

Cassette and ducted units have a water level protection switch. This switch will activate and shut the system off should there be a drain blockage. The system will not continue to operate should water levels increase thus preventing ceiling damage.

\* Water pump optional on all Ducted unit



## Built-in Drain Pan

Disadvantages of the outside(exposed) drain pan is the collection of dust and bacteria. The Hisense built-in drain pan is cleaner and more durable.